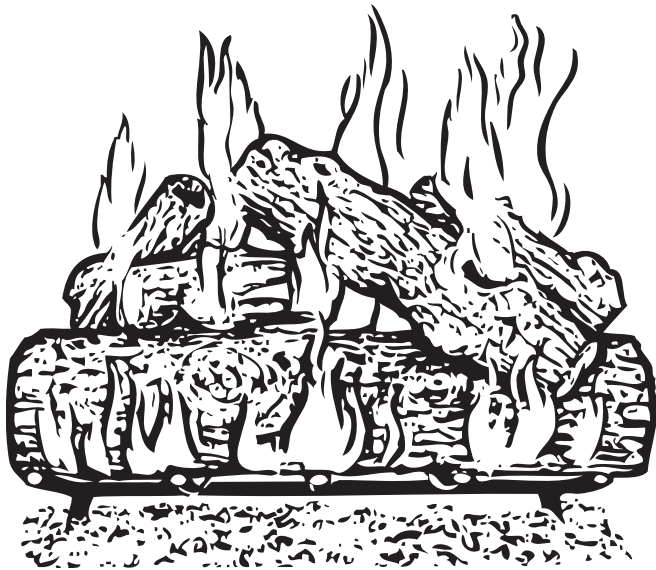
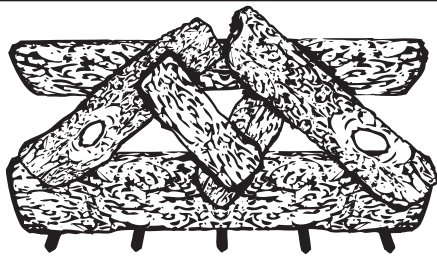


LOG SET IMPORTANT INFORMATION



This instruction contains recommended log placement for your Real Fyre log set. This instruction contains recommended log placement for these Real Fyre logs which will promote good combustion and provide superior flame pattern and appearance, **when the logs are used with a Peterson burner system. Adequate ventilation is absolutely necessary!** Provided significant, noticeable sooting **does not** occur, some flexibility is possible in log placement to suit your individual preference (see Important below). If you experience a continued accumulation of black carbon (soot) on your logs it is an indication of incomplete combustion and you should move the effected log(s) so as to minimize the flame contact on the effected log(s). Please read these instructions completely and carefully.



Important: Adequate ventilation is absolutely necessary. Adequate spacing between the logs is **NECESSARY and MUST be maintained**. Some carbon build up (sooting) may occur where flames strike the logs. If carbon build up (sooting) continues, rearrange top logs to allow more opening(s) for flame(s) before sooting becomes worse. **If any sooting occurs outside of the firebox (i.e. on the walls), turn off unit immediately and contact a qualified professional service technician.**

WARNING: Use **ONLY** Real Fyre burners and valves with this Real Fyre gas log set. **Failure to do so may result in property damage or personal injury, and will void listings, certifications, and invalidate claims made to RHP.** Contact your local Real Fyre dealer if you need more information.

This product is only warranted when used as part of a Robert H. Peterson Co. vented burner system.

WARNING: This gas log set is for use with R.H. Peterson Co burners (and parts) ONLY.

CAUTION: Burn hazard! Logs will remain hot for some time after use. If you need to reposition any log to maintain the proper layout, use heat resistant gloves or allow logs adequate time to cool before handling.

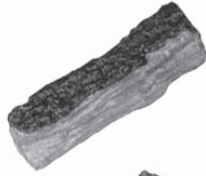
Failure to use Peterson burners and valves may result in a **DANGEROUS** situation and in property damage, personal injury or even death; will void listings and certifications; and will void any insurance coverage by R.H. Peterson Co or our insurers.

Split Oak (Low Profile Set) Placement Instructions (18" and 20" model)

S6-18 and S6-20 PARTS LIST

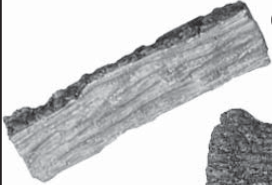
⑤ SL6-9TL

⑥ SL6-9TR



③ SL6-10T

④ SL6-10T



② SL6-15BR



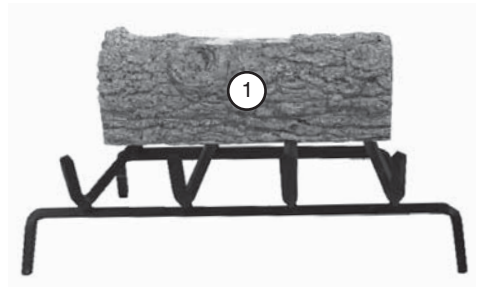
① 18" SL6-18BF
20" SL6-20BF

20" log set shown

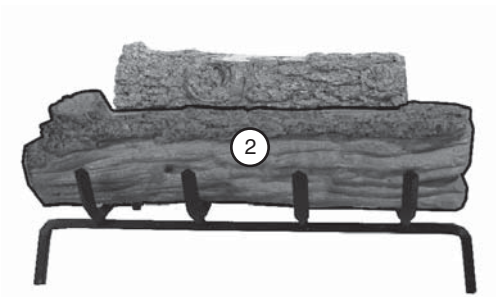
CAUTION: Burn hazard! Logs will remain hot for some time after use.

All items for this log set are included in one (1) box.

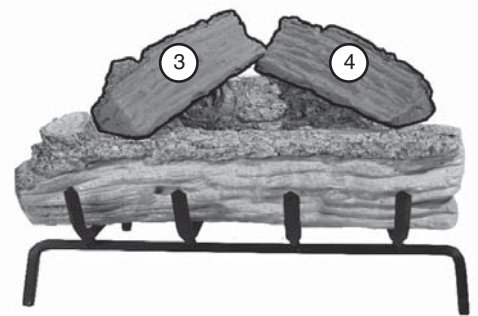
I



II

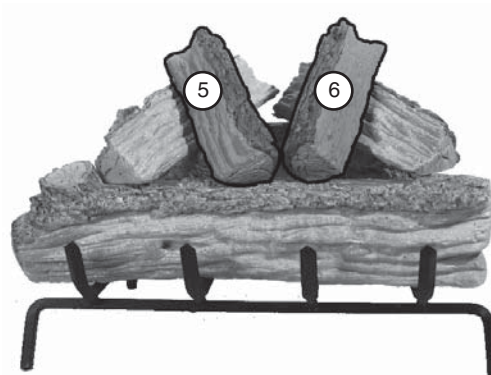


III



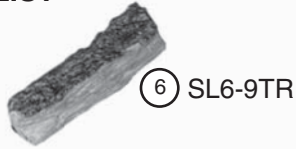
IV

Final Log Placement



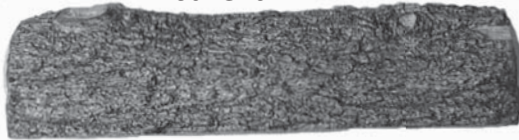
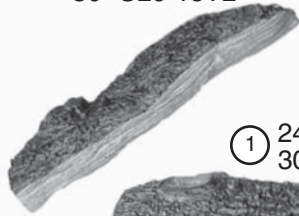
Split Oak (Low Profile Set) Placement Instructions (24" and 30" model)

S6-24 and S6-30 PARTS LIST



* ③ 24" SL6-13TL
30" SL6-15TL

* ④ 24" SL6-13TR
30" SL6-15TR



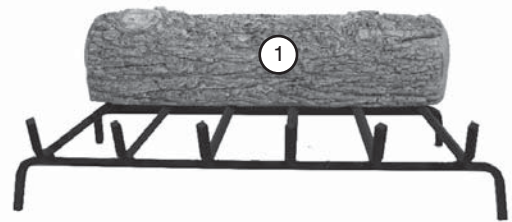
* ② 24" SL6-24BF
30" SL6-30BF

30" log set shown

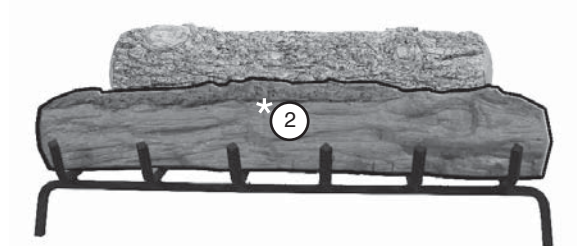
CAUTION: Burn hazard! Logs will remain hot for some time after use.

All items for this log set are included in one (1) box.

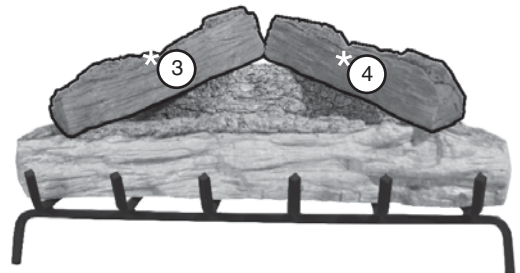
I



II

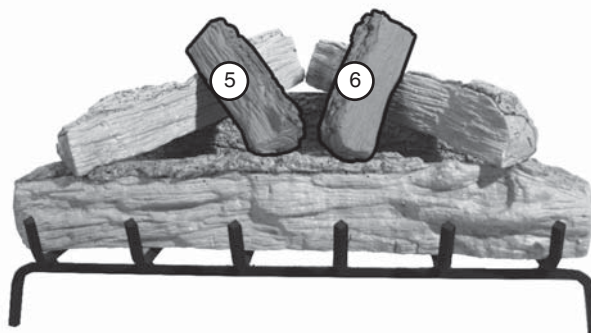


III



IV

Final Log Placement



*This log is shaped differently in the 24" log set, but the log placement is the same (see II and III).