

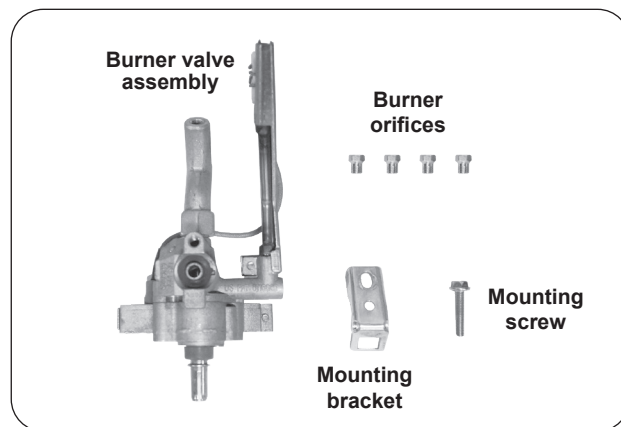
FIREMAGIC®

CHOICE Valve Replacement Kit

Model # 3025

INSTALLER: Leave these instructions with consumer.

CONSUMER: Retain for future reference.



This valve replacement kit is only for installation on Choice Grills by a **qualified professional service technician**.

TOOLS REQUIRED: Phillips screwdriver, 7/16" hex nut driver, 5/16" hex nut driver, 9/32" hex nut driver

INSTALLATION

1. Be sure the unit is completely cool, the control knobs are turned to the OFF position, and the gas supply is turned off.
2. Open the control panel of the grill (see CONTROL PANEL REMOVAL section in the grill owner's manual for details). It may be necessary to rest the control panel (with chain attached) directly onto the grill cooking grid area to allow the manifold to be detached safely. See Fig. 1-1.

Note: Multi-user grill models use a cooking grid locking channel. When removing the control panel, the locking channel will also need to be set aside.

3. Remove the nuts, lock washers, and bolts on each end of the manifold using a 7/16" nut driver (see Fig. 1-1).
4. With two hands, carefully detach the manifold (see Fig. 1-2).
5. Pull the drip tray halfway out and rest the manifold on the drip tray (see Fig. 1-3).
6. Locate the old valve on the manifold and remove the top mounting screw using a 5/16" hex nut driver (see Fig. 1-3).
7. Remove the mounting bracket and carefully detach the old valve from the manifold pipe by pulling it downward.

Procedure continued on following page.

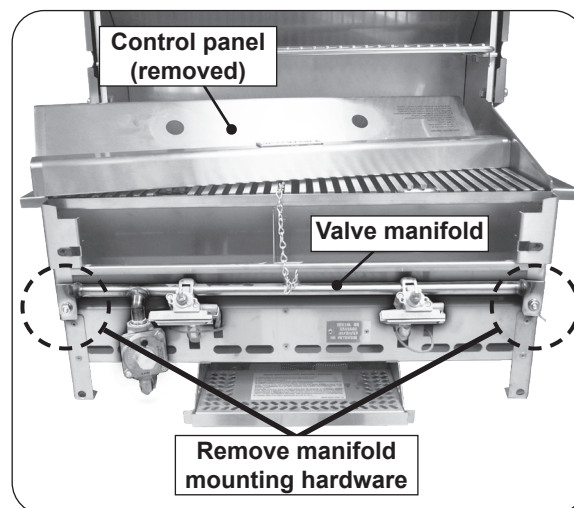


Fig. 1-1 Unfasten manifold



Fig. 1-2 Remove manifold

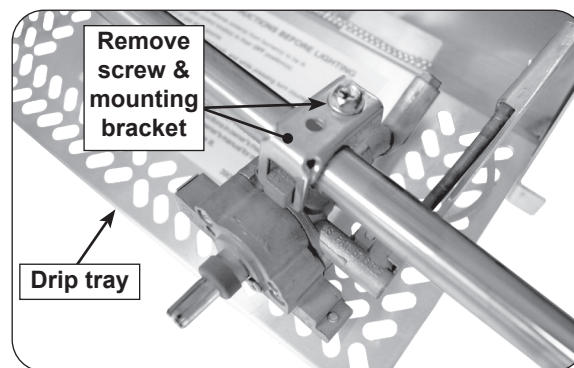


Fig. 1-3 Remove old valve

8. Locate the correct orifice required for your grill. Orifices are included in this kit. Using a 9/32" hex nut driver, install the correct orifice into the orifice holder of the new valve assembly.

Important: **THE CORRECT ORIFICE MUST BE USED FOR YOUR SPECIFIC GRILL MODEL.** Reference Table 1 below for the correct orifice size.

WARNING: HAZARDOUS OVERHEATING WILL OCCUR IF A NATURAL-GAS ORIFICE IS USED WITH PROPANE GAS.

Gas Type	Grill Model	
	C430, CM430, CMA430, C650, CM650	C540, CM540
	Orifice size	Orifice size
Natural Gas	#41	#43
Propane Gas	#54	#55

Table 1

9. Align the new valve assembly to the manifold and insert the gas valve inlet tube to the exposed hole on the manifold (see Fig. 2-2).
10. Secure the valve using the included mounting bracket and screw using a 5/16" hex nut driver (see Fig. 2-3).
11. Reinstall the manifold to the grill.
12. **Test the electrode spark for proper ignition:** When the manifold is installed, ensure the electrodes on ALL valves are sparking to the flame tubes of the valve assemblies, NOT the grill liner. To test this, reinstall the control knobs to their corresponding valve stems (with the control panel removed). Test the ignition by pushing in and turning the control knob. If the electrode is sparking to the grill liner, adjustment of the manifold positioning or manually adjusting the flame tube will be needed until the flame tube and electrode is as centered as possible to the liner cutout. Carefully adjust the tube with your hand or with a tool and retest the ignition until the electrode is sparking to the flame tube. See Fig. 2-4.
13. Leak test the new valve connection. Refer to the unit owner's manual if needed.
14. Remove the control knobs, then reinstall the control panel.

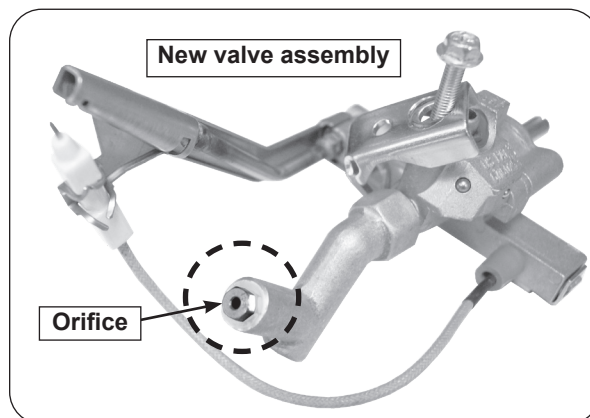


Fig. 2-1 Install new orifice

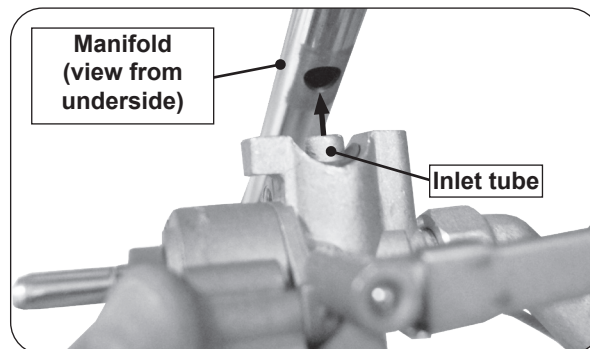


Fig. 2-2 Attach new valve to manifold

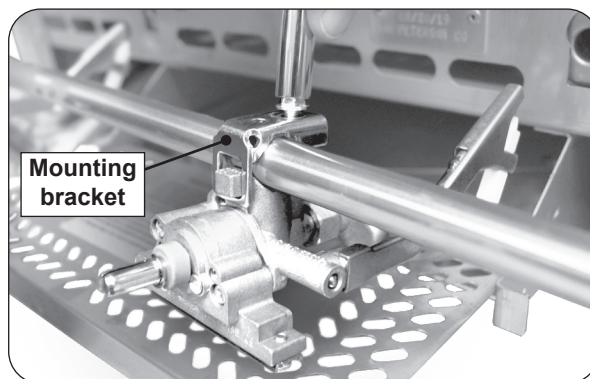


Fig. 2-3 Secure new valve to manifold

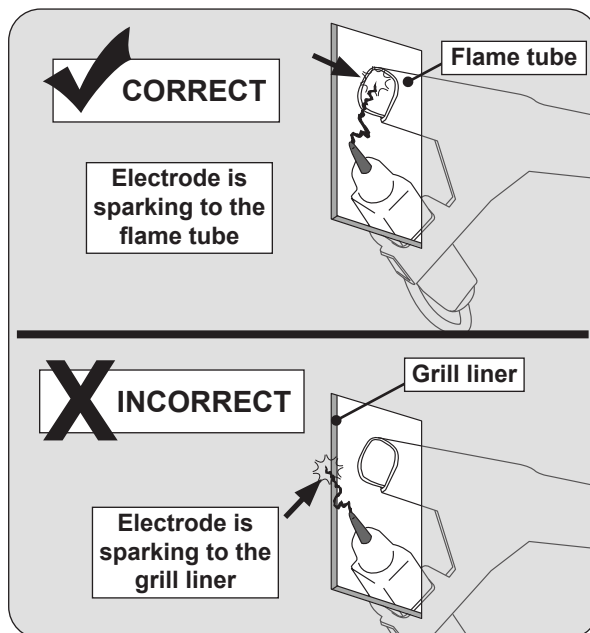


Fig. 2-4 Electrode spark- CORRECT vs INCORRECT