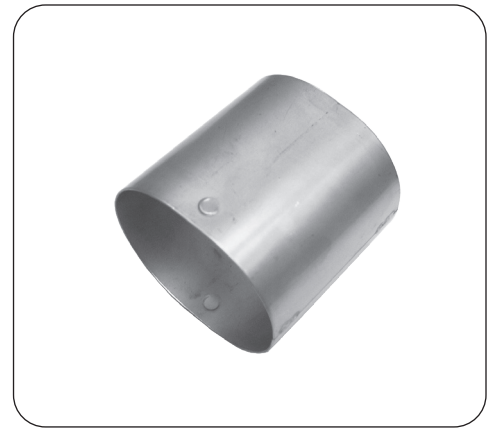


FIREMAGIC®

Flame Arrester

Part # 24177-05

INSTALLER: Leave these instructions with consumer.
CONSUMER: Retain for future reference.



This flame arrester is for installation on a Fire Magic grill with die-cast E-burners (**Note:** Not for use with infrared burners). **Reference the main owner's manual (provided with the grill) to assist in the removal and replacement of parts involved in this procedure.**

To install, follow the steps below:

1. **Be sure the grill is completely cool and the gas is completely shut off.**
2. Open the control panel. Refer to the grill owner's manual.
3. Remove the burner from which you wish to install the flame arrester. Refer to your grill owner's manual if needed.
4. Locate the orifice holder (see Fig. 1-1). The orifice holder is accessed from the inside of the grill.
5. Adjust the burner air shutter to the correct opening if needed (see Fig. 1-2). Refer to your grill owner's manual for the air shutter opening size.

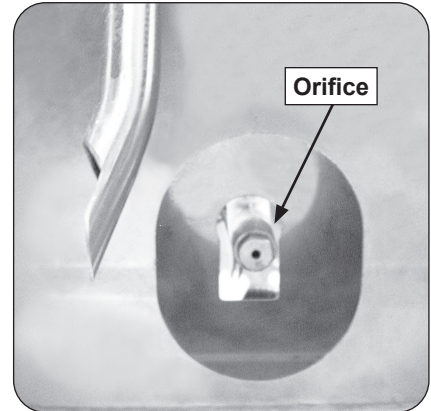


Fig. 1-1 Orifice holder location

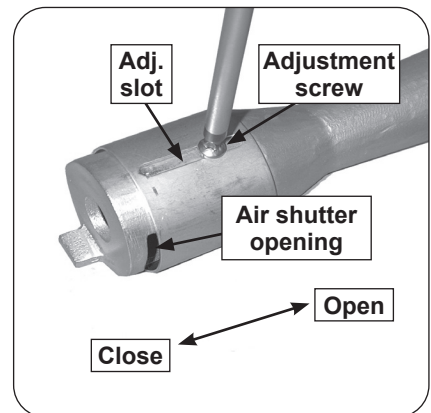


Fig. 1-2 Adjust air shutter

Procedure continued on following page.

6. Install the diverter tube into the cutout from the inside of the grill and slide it into place until the tabs are reached (see Fig. 2-1).
7. To lock the diverter tube in place, push out the inner liner wall, while pushing in on the diverter tube from the inside of the firebox (see Fig. 2-2 and Fig. 2-3).
8. Push the diverter tube in completely until tabs click into place on each side (see Fig. 2-3 and Fig. 2-4).
9. Replace the burner.
10. Repeat for each additional burner as applicable.
11. Reinstall the control panel and any other components removed.

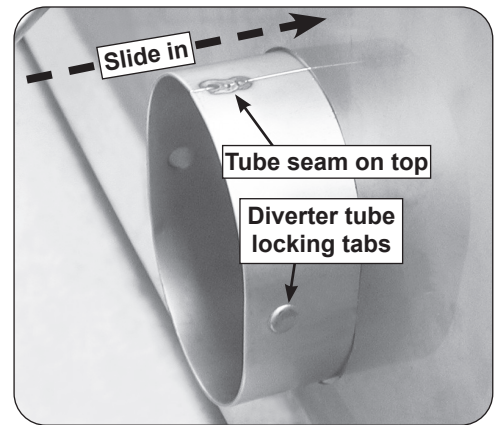


Fig. 2-1 Installing diverter tube



Fig. 2-2 Locking diverter tube in place



Fig. 2-3 Secure tabs

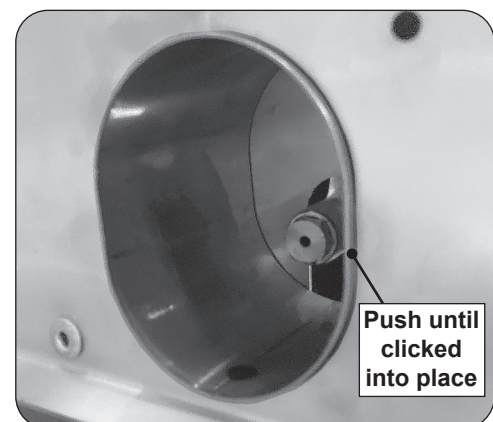


Fig. 2-4 Diverter tube installed