



# Electric Grill Element

Part # 23115-01(A)

**INSTALLER:** Leave these instructions with consumer.  
**CONSUMER:** Retain for future reference.



This heating element is for replacement on a Fire Magic Electric Grill. Read these instructions completely prior to installing.

1. **Ensure the grill is completely cool and the power supply is disconnected.**
2. Remove the cooking grids and warming rack.
3. Partially slide the drip tray out (to support the control panel when removed).
4. Loosen the nuts underneath the control panel with a 11/32" wrench, then lift the panel until it is freed from the screws. Carefully rest the panel on the drip tray. Reference Fig. 1-1.
5. Locate the two insulated wires and disconnect (see Fig. 1-2).
6. Using a Phillips screwdriver, remove the top screws on the element support box (see Fig. 1-3).
7. Lift the element upward, and remove the bottom screws on the element support box. Then remove the support box cover. See Fig. 1-4.

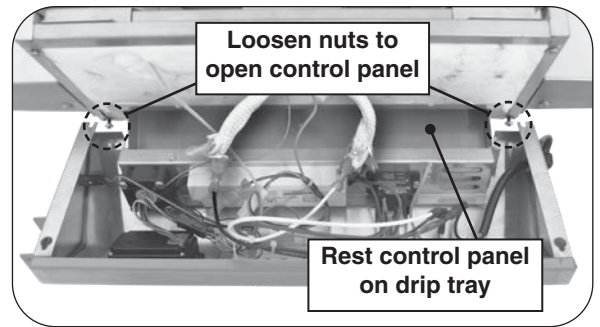


Fig. 1-1 Remove control panel

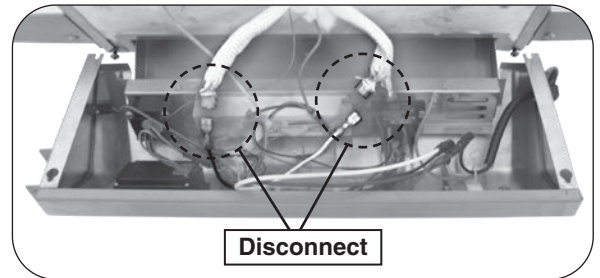


Fig. 1-2 Disconnect insulated wires

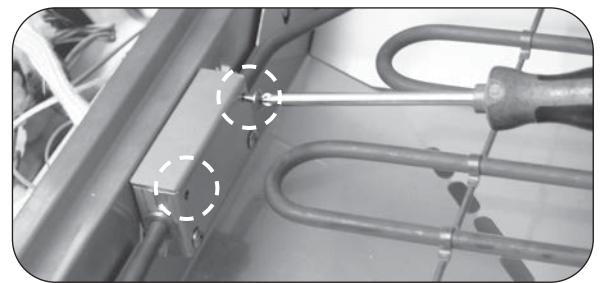


Fig. 1-3 Remove top screws

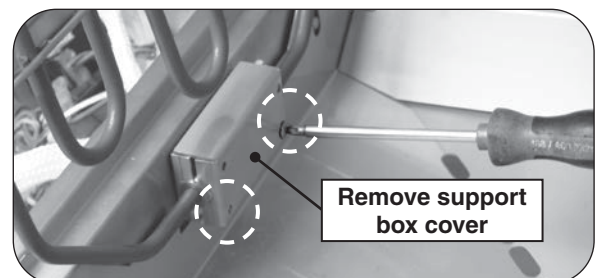


Fig. 1-4 Remove bottom screws & cover

8. Remove the element and insulated wires from the unit (see Fig. 2-1).

**Note:** The support box may come out with the insulated wires when removing the element. Retain the support box as it will be reinstalled with the new element.

9. Place the support box onto the new element's insulated wires. Then, with the element crossbar supports facing downward, feed the insulated wires through the exposed opening in the front liner. See Fig. 2-2.

Secure the support box in place and ensure the element is properly positioned.

**Note:** The support box aligns over two screws found on the front liner, followed by the heating element which has grooves that align over the support box edges (see Fig. 2-3).

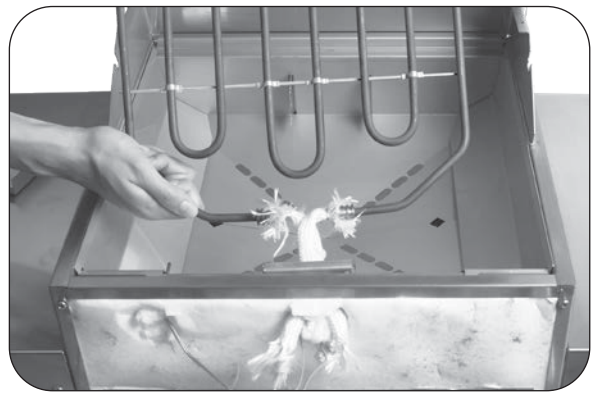
10. Install the support box cover and fasten using the previously removed screws and a Phillips screwdriver.

11. Connect the two insulated wires (see Fig. 2-4).

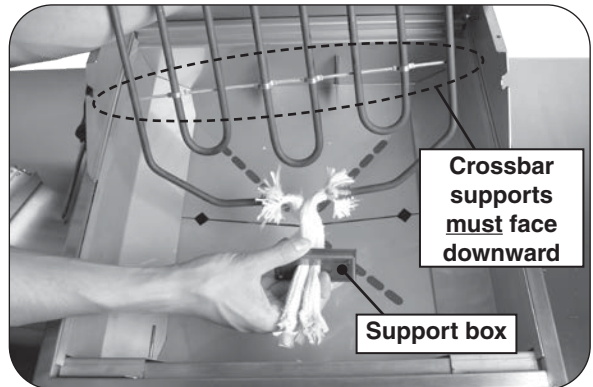
12. Re-insert any insulation that may have fallen out during this installation.

13. Replace the control panel, drip tray, cooking grids, and warming rack.

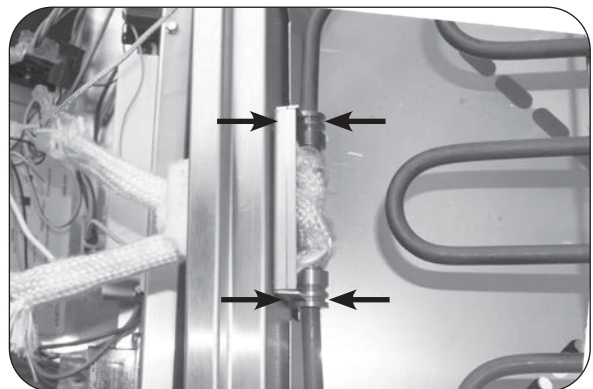
Refer to the owner's manual provided with your electric grill for all information regarding further use.



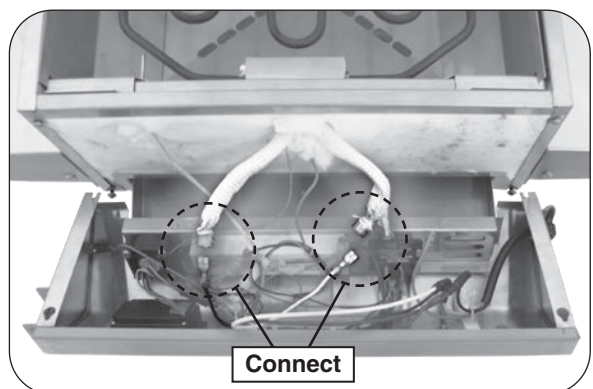
**Fig. 2-1** Remove element



**Fig. 2-2** Install new element



**Fig. 2-3** Properly align element



**Fig. 2-4** Connect insulated wires