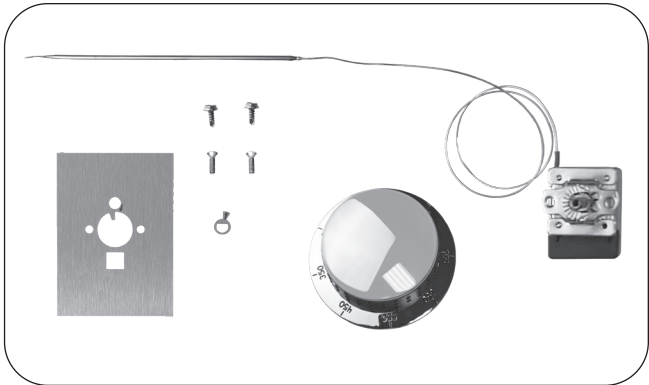




Pizza Oven Thermostat Control Replacement

Model # 24195-12

INSTALLER: Leave these instructions with consumer.
CONSUMER: Retain for future reference.



This Fire Magic thermostat control replacement kit is for replacement on Fire Magic pizza ovens. Read these instructions completely prior to installing.

1. Be sure the unit is completely cool, the control knob is turned to the OFF position, the gas supply is shut off, and the power supply is disconnected.
2. Remove the control knob from the thermostat control stem. Then gently lift the LED disk from the stem and carefully disconnect the wire from the disk. See Fig. 1-1.

Note: When disconnecting wire, ensure to carefully pull from the connector, not the wire.

3. Using a Phillip's head screwdriver, remove the two thermostat screws from the control panel (the thermostat will drop). See Fig. 1-1.
4. Open the control panel: Unscrew and remove the control panel fastener screws and washers. Retain the screws for later re-installation. Then, carefully open the control panel by lifting and pulling it from the frame, allowing it to rest on the internal chains. Refer to the appliance owner's manual for control panel removal if needed.
5. Disconnect the two wires from the back of the thermostat (see Fig. 1-2, A).
6. Locate the LED disk wire that is exiting the control panel face, and carefully retract the entire wire back into the control panel (see Fig. 1-2, B).
7. Using a 1/4" hex driver, remove the two screws and the bracket that holds the thermostat sensing bulb. Save bracket for later installation. See Fig. 1-3.

Installation continued on next page

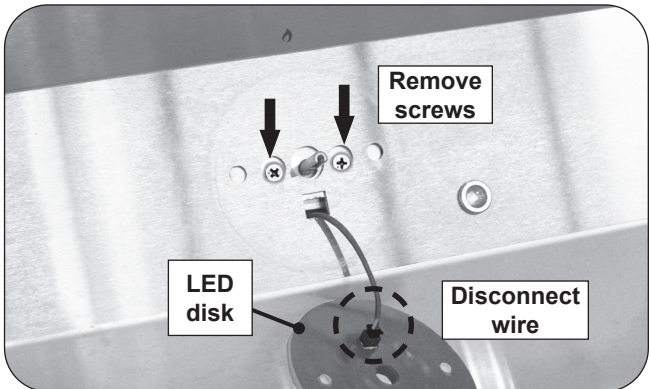


Fig. 1-1 Remove thermostat screws and LED disk

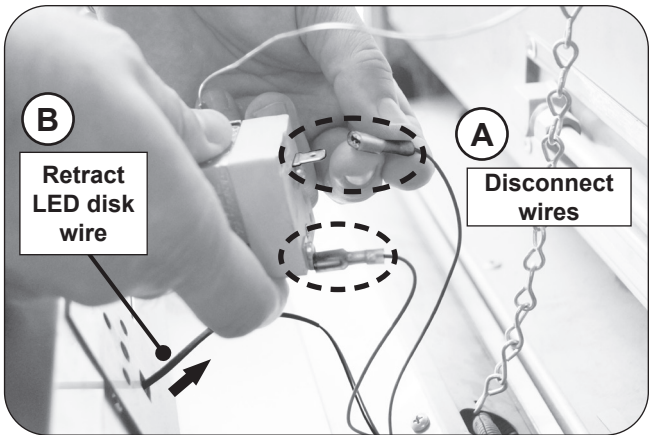


Fig. 1-2 Disconnect wires

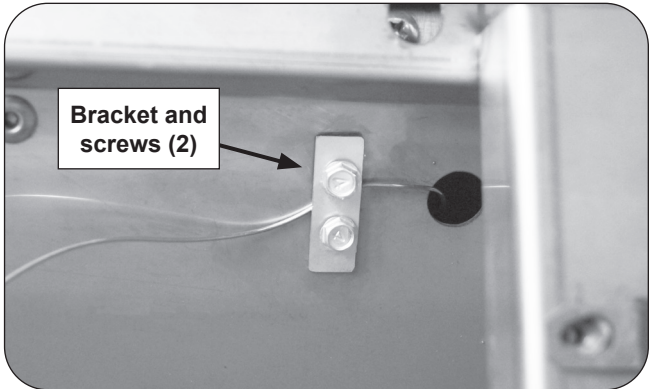


Fig. 1-3 Bracket and screw detail

8. Carefully slide out the old thermostat sensing bulb and tube.
9. Measure 7 1/2" from the new thermostat sensing bulb tip to the tube and gently create a slight bend (approximately 90°) in the tube (see Fig. 2-1).

Note: Do not stretch out tube to straighten. Uncoil the tube by gently unwinding the curve to straighten. Do not kink the tube.

10. Insert the new thermostat sensing bulb into the opening and carefully slide inward being sure it goes through both spacer holes inside the bulb housing. See Fig. 2-2. Secure the tube using the previously removed bracket and the two supplied hex screws.

11. Locate the two previously disconnected wires and connect them into any of the two terminals of the new thermostat.

12. Take the provided small washer with the arrow pointing upward, and slide it onto the new thermostat stem. See Fig. 2-3, A.

13. Position the plate firmly against the thermostat control, ensuring that the two arrows are directed towards each other in alignment. See Fig. 2-3, B.

Note: To ensure proper installation and functionality, the plate and washer **MUST** be properly aligned and **MUST** rest flush against each other.

14. Ensuring that the holes on the plate and thermostat are aligned with the corresponding holes on the control panel, carefully fasten the assembly to the control panel using the remaining provided screws. See Fig. 2-3, C.

15. Guide the LED disk wire out through the recently affixed plate (with a square cutout), ensuring that the wire exits out the control panel face.

16. Close and resecure the control panel.

17. Connect the LED disk wire to the LED disk.

18. Position the LED disk over the new control knob and ensure the knob bushing insert is protruding through the disk center hole. See Fig. 2-4, A. While firmly holding both pieces together, carefully install the knob/LED disk onto the stem. See Fig. 2-4, B.

Note: Only use the new knob supplied with this kit.

Note: Ensure the LED disk wire and connector enters through the square cutout to allow the knob to fully install onto the stem.

19. Turn on the gas and power supply, and test the unit.

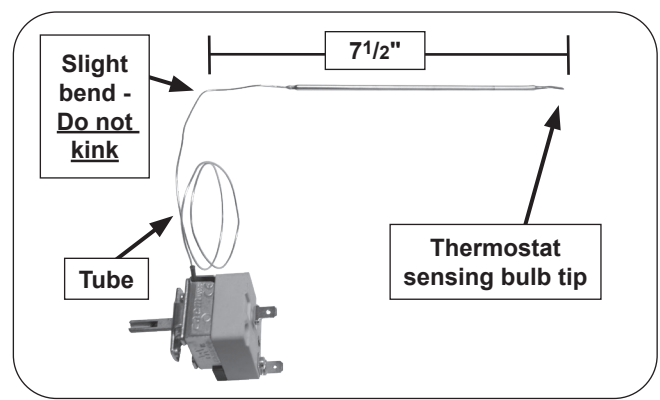


Fig. 2-1 Measure and bend tube

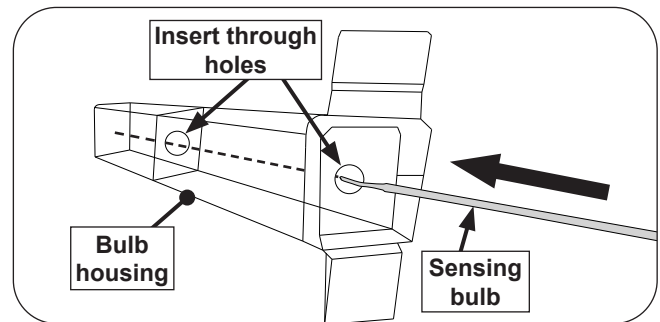


Fig. 2-2 Insert thermostat bulb into center spacers

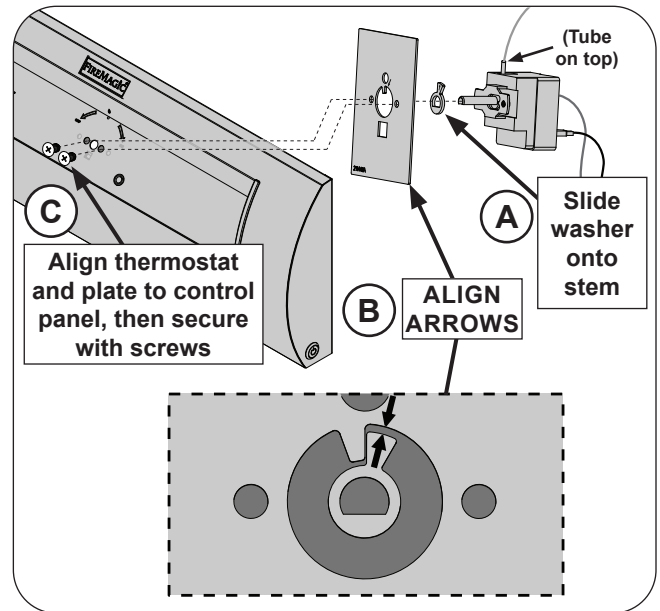


Fig. 2-3 Assemble/mount thermostat

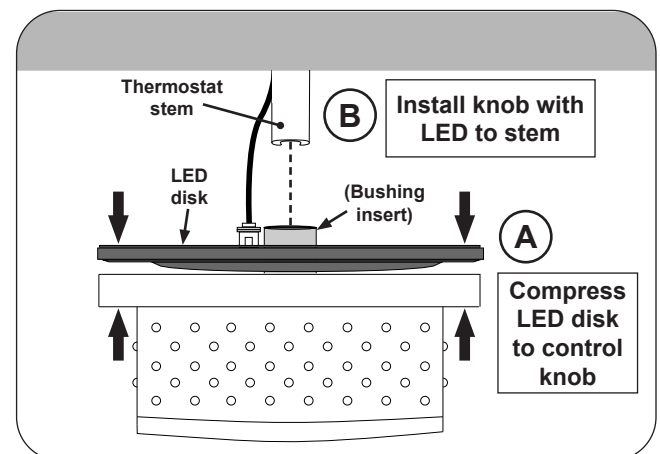


Fig. 2-4 Install control knob and LED disk