

# RHHP

# Connect

*Hot News from RH Peterson Co.*

**October, 2022**

**In this issue:**

**RH Peterson Co. earns CSA Certification as a Testing Facility**

**New Fire Magic Commercial SIZZLES**

**TECH TALKS: Horizontal Propane Tanks - Safety First**

**You Can Do WHAT On A Grill??? Get Inspired With 8 Great Recipes**

***"That's MY Grill!"***

## RH Peterson Co. earns CSA Certification as a Testing Facility



At the end of September, RH Peterson Co. was again qualified by CSA Group Testing Certification as a testing facility for ***Witnessed Manufacturer's Test for Certification Program***.

As an accredited laboratory, RHP can perform its own testing, for submission of data to certification agencies.

This allows agencies to virtually witness our testing procedures. Over the years, RHP has acquired close to a half a million dollars of required equipment necessary for gas product testing and has hired experienced engineers and laboratory personnel to meet these challenges.

Some of the major benefits of the CSA Certification:

- It allows RHP to expedite project testing in-house to ready the product for sale
- Immediate changes to the products can be made when needed, eliminating the costs for outside lab testing in addition to the hassle of shipping the (very heavy) products to test
- The certification is valid for one year and must be earned annually – it is not automatically renewed.

October 10, 2022

[Print the CSA  
Announcement](#)

[New Fire Magic Commercial](#)

Fire Magic Grills are made by people who demand the best , for people who demand the best.

We're pleased to announce the release of a new 30-second Fire Magic commercial with audio. It's a good fit for cable TV advertising, in your store or on your website.

Filmed here in Southern California, this quick clip features an inviting swimming pool as a backdrop and models for a complete lifestyle integration.



[Link for commercial](#)

---

**In this issue of *Tech Talks*, we discuss the new horizontal propane tanks and the special attention they require when installing.**

(If there are some technical topics you'd like to see us review, please send an email to: [eremy@rhpeter.com](mailto:eremy@rhpeter.com))

---

## **Horizontal LP Tank Installation Requires Special Attention**

The American Fyre Designs (AFD) Contempo LP Select has proven to be very popular as it offers a coffee table height fire table without the need for a remote propane tank. **Remember this design has special installation requirements that must be followed:**

- A standard vertical LP tank may not be installed and simply turned on its side – **a 20lb DOT type LP cylinder designed for horizontal installation must be used**
- When installing the horizontal LP cylinder into the fire table drawer, be certain to orient the tank with mounting plates on the bottom, handles on top and valve facing inward (see attached installation notice for details)
- **It is also important not to overfill the 20 lb DOT type tank** – follow the instructions printed on the tank and use the leveling gage to ensure the tank is filled properly (see enclosed photo). *Note while most tank manufacturers include a mechanism to prevent overfilling, some do not.*

Installing the cylinder upside down or overfilling the cylinder can cause liquid propane to flow into the hose and/or regulator area where it expands creating very cold temperatures. This can damage the regulator and/or relief valve causing the unit to malfunction. If this happens, the hose/regulator assembly must be replaced.

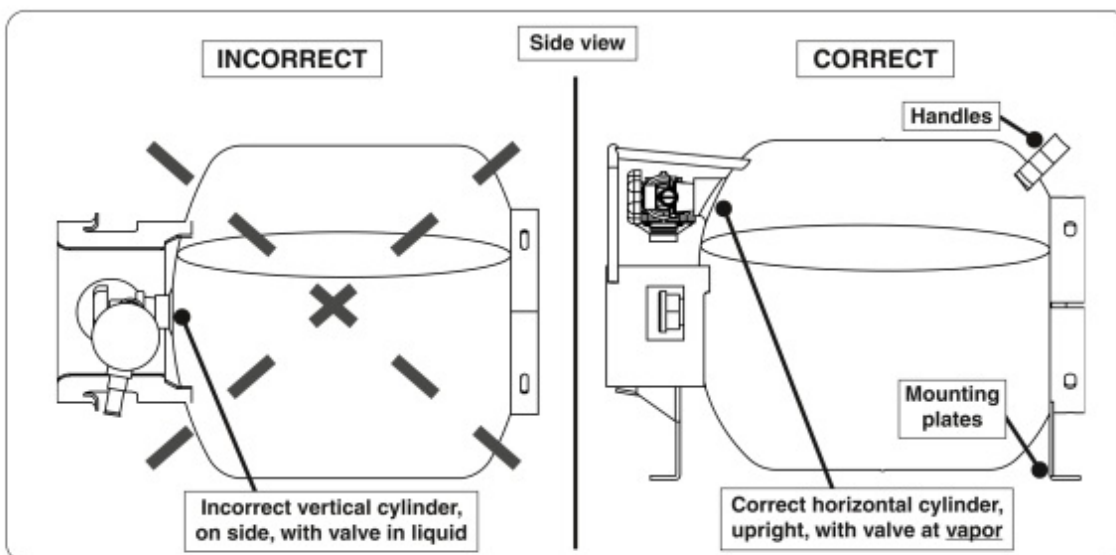
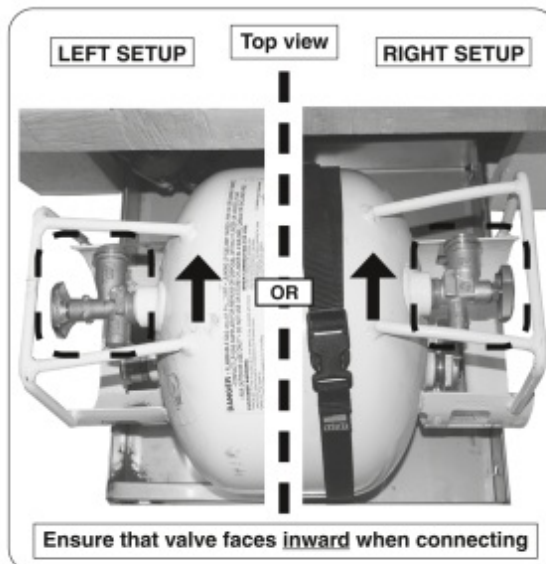
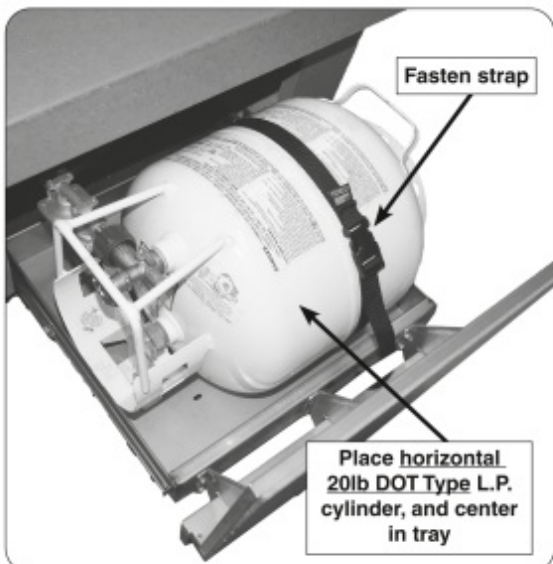
For complete information, please refer to the AFD owner's manual and the LP tank information provided by the cylinder manufacturer

## Contempo Select Firetable: L.P. Cylinder Important Notice

WHEN INSTALLING, ENSURE THE FOLLOWING REQUIREMENTS ARE MET.  
REFER TO YOUR OWNER'S MANUAL FOR COMPLETE INSTALLATION DETAILS.

**Note:** A horizontal 20lb DOT Type L.P. cylinder is required for operation.

**WARNING:** DO NOT use a vertical 20lb cylinder - a vertical cylinder must never be operated on its side. A fire causing death or serious injury may occur.



Print October Tech Talks  
Sheet

Instructions for Horizontal  
Propane Tanks



## Propane Tank Label Close Up



## Fire Magic in the Media



### Above: Bacon and Egg Breakfast Pizza

It's easy to get caught in a conundrum of cooking the same old things every week. Sometimes, you just need some variety. Well, we've got you covered! Watch Steven Raichlen as he grills foods you may not have considered cooking on a Fire Magic or American Outdoor Grill.

The Sales and Marketing Team are salivating over the last recipe - something ooey, gooey and yummy that honestly never even crossed our minds, but it's brilliant! Variety is the spice of life - go for it!

Bon Appetit!

More of Steven's video recipes are available - check the [Project Fire website](#) for a list of local stations airing the show.

## 8 Unique Grill Recipes to INSPIRE your Inner Chef

### "THAT'S MY GRILL!"



Thanks to all who submitted photos for "That's MY Grill!" Your photo may be used in a future issue of *RHP Connect*.

Nestled deep in the canyons of Los Angeles with a stately hedge providing a softened backdrop, lies a handsome linear BBQ Island. A Fire Magic Regal I Drop-In Grill and deep emerald-colored hand-crafted

artisan tiles laid in a stacked pattern create a visual impact paired against the matte finish of the barbecue.

Significant counter space - and a sink - allows all hands on deck for food preparation. A single strand of Edison lights adds to the ambiance, illuminating this special area for evening grilling and entertaining.

Thank you **@andandandstudio** of Los Angeles and Toronto, for your submission. Catch more of their stunning designs on Instagram.

---

Thank you and cheers to good  
health.

---

RH  PETERSON co.